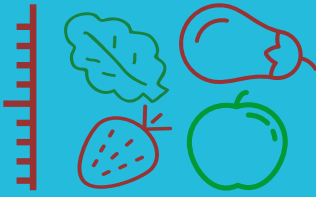


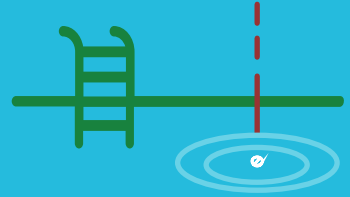
# Human Health and Pesticides



Residues are *measurable traces* of pesticides on harvested food crops.



Pesticide *residues* on food *are very low*, if present at all.



A typical residue is so tiny it would equate to *a few drops in an Olympic swimming pool*.

GLOBALLY,  
REGULATORS



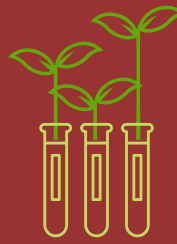
set *very strict limits* on pesticide residues. Safety margins are typically *100 times* that of actual *safety levels*.



THE  
CROP PROTECTION  
INDUSTRY

also *helps minimize residues* in crops by *training farmers* to properly use and only apply pesticides when necessary.

SYSTEMS  
are in place to  
*monitor that residues*  
are within safety limits.



Hundreds of thousands of food samples worldwide are *analyzed for residues year after year*.

Pesticides are *not associated with human diseases* when used responsibly.



All chemicals, even oxygen and water, can be toxic if overconsumed.

**PESTICIDE**  
• FACTS •